

# Wind power generation construction period



## Overview

---

After necessary approvals during the development phase, a wind project can usually be built in six to nine months. The construction phase includes building roads, pouring foundation, and transporting, erecting, testing and commissioning completed wind turbines.

## Wind power generation construction period

---

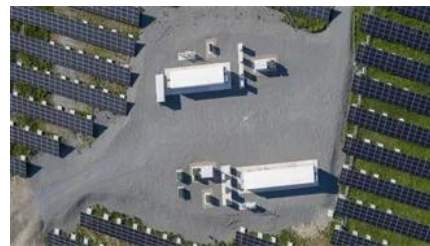


### [How long does it take to build an onshore wind farm?](#)

With onshore wind farm construction timelines, the actual construction phase can be finished quite quickly. A small 10 MW onshore site

### [How Long Does It Take to Build a Wind Turbine? Timeline Explained](#)

Discover the timeline for building a wind turbine! Learn how long it takes and the key processes involved. Get insights into



### [How Long Does It Take To Build Wind Turbines?](#)

How Long Does It Take to Build Wind Turbines? The construction of a wind turbine, from initial planning to full operation, typically takes 6 to 24 months, depending on project size, location,

### [How Long Does It Take To Construct A Wind Farm](#)

In summary, the construction timeline for wind farms varies depending on the project's size and complexity, but the average time for



### **Wind Project Development Process**

After necessary approvals during the development phase, a wind project can usually be built in six to nine months. The construction phase includes building roads, pouring foundation, and transporting,

[E8: Why does it take five years to build a wind farm?](#)

For wind farms, I'd say you're talking minimum five years, and how far out it goes just depends. LHF: And five years to approve a wind farm is actually short compared to some of the other



**Windy: Rio de Janeiro weather forecast**

Rio de Janeiro weather forecast. Meteogram, airgram, wind, clouds, temperature, humidity and dew point forecast. ECMWF, WRF, GFS, NAM, NEMS and other forecast models.

**Windy: Wind map & weather forecast**

Windy: Wind map & weather forecast Cannot get info.json from im server.



[How Long Does It Take to Build a Wind Turbine?](#)

From initial planning (feasibility studies, securing permits) to final commissioning and grid connection, a wind farm project can span five to ten years or longer before full operation.

[Wind Farm Construction: Complete Process with Real](#)

Discover how wind farms are built, from the study of wind and terrain to the construction and maintenance phases. Read more!



**Windy API**

Get forecast for specified coordinates Obtain



### **Windy: Wind map & weather forecast**

Windy provides real-time wind maps and accurate weather forecasts with user-friendly layers and precise spot forecasts.



### **Windy: Wind map & weather forecast**

Worldwide animated weather map with layers, precise forecasts, METAR, TAF, NOTAMs for airports, SYNOP codes from stations and buoys, and forecast models.



data for wind, temperature, precipitation, air quality and other 20 parameters.



### [How Are Wind Turbines Built? From Foundation to Finish](#)

Discover the precise, multi-stage engineering and logistical planning required to construct a modern, utility-scale wind turbine.



### **Windy: Wind map & weather forecast**

Weather radar, wind and waves forecast for kites, surfers, paragliders, pilots, sailors and anyone else. Worldwide animated weather map, with easy to use layers and precise spot forecast.

## **Contact Us**

For catalog requests, pricing, or partnerships, please visit:

<https://european-startups.eu>