

What is the grid connection point of an energy storage power station



What is the grid connection point of an energy storage power station



Grid energy storage

Energy from fossil or nuclear power plants and renewable sources is stored for use by customers. Grid energy storage, also known as large-scale energy storage,



CSS Grid Generator (Drag & Drop)

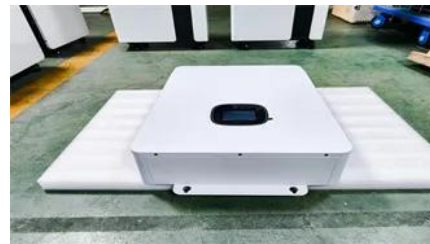
CSS grid generator is a tool that helps developers create custom CSS grid layouts more easily. The generator allows users to specify the number of columns, rows, the gutter size.



[Utility-scale battery energy storage system \(BESS\)](#)

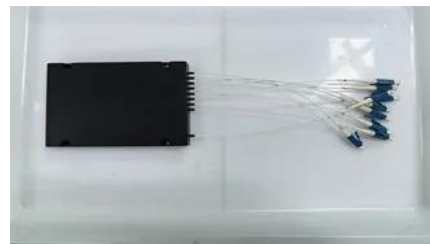
[A Complete Guide to CSS Grid Layout , CSS-Tricks](#)

Our comprehensive guide to CSS grid, focusing on all the settings both for the grid parent container and the grid child elements.



CSS grid layout

Like tables, grid layout enables an author to align elements into columns and rows. However, many more layouts are either possible or easier with CSS grid than they were with tables.



[GRID: A simple visual cheatsheet for CSS Grid Layout](#)

Learn all about the properties available in CSS Grid Layout through simple visual examples.

Battery storage systems are emerging as one of the potential solutions to increase power system flexibility in the presence of variable energy resources, such as solar and wind, due to their unique



[Making better use of the grid connection point.](#)

Typical grid connection points are substations, switchgear or transformer stations, which ensure that the electricity flows safely and efficiently through the grid.

Energy storage / Grid Connection Point

Therefore, they have a grid connection point (GCP) through which energy can be output. This is the output point through which electricity is received from the power plant and transferred to



Grid by Example

Get Started Guide A structured guide to resources that will help you to start learning CSS Grid Layout.

[Today's Outlook , Demand , California ISO](#)

Monitor real-time grid conditions. View current and historical data for demand, net-demand, supply, renewables, CO2 emissions and wholesale energy prices.



[How Does a Solar Farm Connect to the Grid?](#)

How Does a Solar Farm Connect to the Grid? All solar farms connect to a specific point on the electrical grid, the vast network of wires that connects every power

[What is energy storage operation and grid connection?](#)

Energy storage operation and grid connection refers to the processes and systems designed to store energy generated from various sources for later

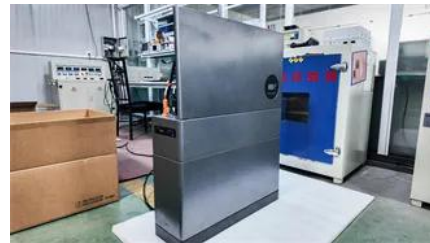


GRID ETF Stock Price & Overview

Get a real-time stock price for the GRID ETF (First Trust Nasdaq Clean Edge Smart GRID Infrastructure Index) with an overview of various metrics and statistics.

CSS Grid Layout

The Grid Layout Module allows developers to easily create complex web layouts. The Grid Layout Module makes it easy to design a responsive layout structure, without using float or positioning.



What is a grid connection point?

A grid connection point (GCP) is the specific location where a grid user - can be an energy producer supplying power to the grid or an energy

[Energy Storage System Grid Connection Points: Key Considerations](#)

Think of grid connection points as the handshake between energy storage systems and power networks. These critical interfaces ensure electricity flows safely between batteries, renewable sources, and



[Interconnection: Connecting Generation Resources and Energy](#)



[Design Engineering For Battery Energy Storage](#)

The grid connection point should be decided early in the design phase. It may be decided to split the BESS into two or more distinct units for

A Practice Note discussing the process of connecting an energy generating or battery storage facility to the electric grid and the legal and regulatory framework applicable to the interconnection process.



Contact Us

For catalog requests, pricing, or partnerships, please visit:
<https://european-startups.eu>