

**The larger the inverter voltage
the larger the ripple**



Overview

The culprit might be feedback ripple voltage - unwanted AC voltage fluctuations superimposed on DC signals. Think of it like waves disrupting a calm pond; these ripples reduce energy efficiency and damage sensitive components over time.

The larger the inverter voltage the larger the ripple



[How to pronounce fractions with denominators larger than 20 where](#)

How to pronounce fractions with denominators larger than 20 where the last digit of the denominator is 1 or 2? eg 4/31 Ask Question Asked 10 years, 8 months ago Modified 5 years, 2 months ago

[Understanding and Mitigating Inverter Feedback Ripple Voltage in](#)

Summary: Inverter feedback ripple voltage is a critical challenge in renewable energy systems. This article explores its causes, impacts on solar installations, and proven solutions.



[Does "increasingly larger" imply an increasing rate of growth?](#)

We often say things become "increasingly larger/bigger", like "The problem of [] is becoming an increasingly larger issue". I was wondering if the addition of the word "increasingly" is

[Analysis of Input Current Ripple and Optimum Filter Capacitor for](#)

Analysis shows that there exists a negative-current zone for a FCS connected to a single-phase inverter producing line-frequency sinusoidal voltage for any power factor other than unity. A suitable input



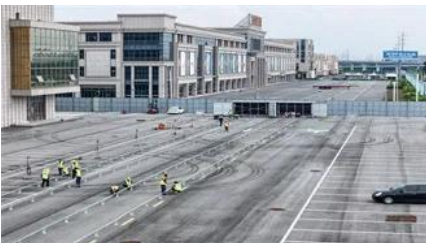


[Word for larger system that is more than the sum of its constituents](#)

The word describes the phenomenon of a larger organised system that does more or has another function than the collective sum of its constituent parts. Or the other way round when lots of

word choice

I was wondering which one is more correct between "the larger of A and B" and "the larger of A or B". I use the former, but I saw in IRS instruction for Form 1040: In most cases, your



[DC-Link Ripple Current Reduction Method for Three-Level Inverters](#)

This paper presents an optimized switching strategy to reduce the dc-link ripple current for three-level photovoltaic (PV) inverters. The large electrolytic capacitors are commonly used for the dc link of

grammar

Would it be ok to say "from smaller to larger" or do I have to say "from smallest to largest" E.g., I'm using the batteries from smallest/smaller to largest/larger capacity.



[What should be the maximum allowable input ripple voltage in design](#)

The upper limit of dc-link capacitor voltage ripple is 5% of the peak value. The lesser is better.

[Difference between "greater" and "larger"](#)

What is the difference between greater and larger? For example, should we say for time, the waiting time is greater than or the waiting time is larger than?



[Understanding, Measuring, and Reducing Output Voltage Ripple](#)

Depending on the type of output capacitor, the values of its parasitic elements could be quite different and consequently the shape and amplitude of the output ripple voltage will vary.

[Word for a small space/dwelling that is much larger on the inside than](#)

I'm searching for a rare word that means a small space/dwelling that is much larger on the inside than it appears from the exterior. It has been in 2 stories I know of: shown as a magical



[Selecting the Right Inductor Current Ripple . Analog](#)

This discusses the different things to consider in selecting the right inductor current ripple.

["The number of students are larger" vs. "The number of students is](#)

What is the correct verb to use, is it is or are? A) The number of students are larger than before. B) The number of students is larger than before.



[Maximum power extraction and DC-Bus voltage regulation in grid](#)



In this study, the maximum permitted voltage ripple and input dc voltage are used to determine the size of the DC-Bus capacitor. It is observed that when the DC input voltage rises, the capacitance

Inverter DC ripple voltage specification

This is presumably a major reason why Victron limit the ripple voltage at the inverter terminals, to avoid excessive heating of the input capacitors inside the inverter.



[What is the correct adjective for weight/mass of objects, heavy or](#)

The units of mass or any other qualified noun are irrelevant: a mass of 10 kg is larger than that of 1 kg whether you measure the mass in kg, tonnes, ounces or milligrams. And I do say "large"

[Ripple Current Analysis of Three-level Inverter based on SVPWM](#)

Since the output of inverter adopting SVPWM does not contain low order harmonics, the power grid voltage is equivalent to a short circuit when higher harmonics are concerned only.



[Diameter comparison: larger, bigger, higher, greater?](#)

Going by Google result hits "larger diameter" 7'420'000 results "'greater diameter" 1'020'000 results "higher diameter" 852'000 results "bigger diameter" 738'000 results So after this I

[Analysis of the effects of inverter ripple current](#)

[on a photovoltaic](#)

In this study an AC impedance model of a solar cell module is developed using Impedance Spectroscopy and it is then used for evaluating the effects of the ripple current generated by a single



Contact Us

For catalog requests, pricing, or partnerships, please visit:
<https://european-startups.eu>