

# Special room for solar photovoltaic power generation



## Special room for solar photovoltaic power generation

---



[Is there an Excel formula to identify special characters in a cell?](#)

Here's a conditional formatting solution that will flag the records with special characters. Just apply a new conditional formatting rule to your data that uses the (extremely long) formula below, where A1

[Why can't you use special characters in a filename, like "?" or](#)

When I try to save a file, if I use special characters in the name (such as a colon, question mark, or exclamation point) in Windows I get a message saying that the file name is invalid.



[How to remap special keys on Asus laptop?](#)

No luck, these special keys on my laptop don't appear to generate scancode or keypress events. (got this idea from a StackOverflow answer, too bad it didn't work for me) Update, 4 years

[Excel destroying special character when saved as CSV](#)

The problem is, whenever the client saves the excel spreadsheet as an MS-DOS .csv file, many of the special characters get converted to question marks "?" (symbols such as ' " / ).



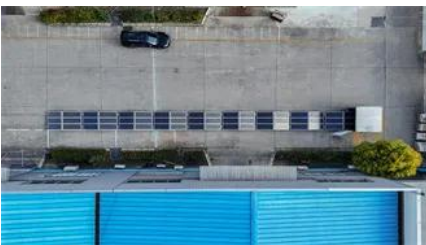
[Notepad++ inserting special Unicode characters in UTF-8](#)



### [How can I type special characters in Linux?](#)

In Windows, there is the possibility to type special signs from the keyboard by holding the Alt key and typing a few numbers, that depends on which sign you want to use. Does it work with

What's the best ways to enter special Unicode characters into a Notepad++ document? Do I have to rely on the operating system (Windows)? Looking for a see-and-click solution. I can bring up the AS



### [Which Special Character Set is accepted in WPA2-PSK passwords?](#)

Apparently the WPA2-PSK password can have a length ranging from 8 to 63 characters. Letters, numbers, and special characters can be used. I would like to know what special characters can be

### [Design, Construction and Typical Case Analysis of Solar PV](#)

In addition, the unit inverter room, LV distribution room, HV power distribution room, fire communication room, and comprehensive building (for living, office, and supervision & control management in the



### **CN115001370A**

The special sunlight room for solar photovoltaic power generation can conveniently adjust the placing angle of the photovoltaic panel and can carry out isolation support at the bottom

### [Windows Explorer sorting order for special](#)

### [characters?](#)

What is the sorting order used in Windows Explorer? I was specifically wondering what special characters sort after the alphabets? As far as I can tell (test), all special characters seem to be



### [Is there a list of Windows special directories/shortcuts \(like %TEMP](#)

There's nothing special about the string "Godmode"; it can be any name you like, so long as it is followed by a period and then the value in curly braces.

### [How to display special non-ASCII Unicode characters in Notepad++](#)

How do you configure Notepad++ to show non-ASCII Unicode characters like this? Note: This questions is related, but different than Notepad++ special Unicode characters not displaying



### [Structural Requirements for Photovoltaic Power Station Generator](#)

Summary: Discover the critical structural requirements for photovoltaic power station generator rooms. This guide covers design standards, material selection, and safety protocols - essential knowledge

## Contact Us

---

For catalog requests, pricing, or partnerships, please visit:  
<https://european-startups.eu>