

Peak and valley of home solar energy storage cabinet system



Overview

Peak shaving refers to reducing electricity demand during peak hours, while valley filling means utilizing low-demand periods to charge storage systems. Together, they optimize energy consumption and reduce costs.

Peak and valley of home solar energy storage cabinet system



Select benefits to apply , Colorado PEAK

If your county has a freeze, they will contact you later to see if you qualify. You can still apply at any time on PEAK. Check to see if your county is affected The Colorado Child Care Assistance Program

[Peak Valley Energy Storage Cabinet: The Swiss Army Knife of](#)

Let's face it - managing peak valley energy storage cabinet applications is like conducting an orchestra during a thunderstorm. Between fluctuating demand and aging grid infrastructure, commercial energy



Sign in , Colorado PEAK

Sign in to your PEAK account to manage your benefits and apply.

[Log In or Apply for Benefits , Colorado PEAK](#)

Use PEAK to learn about, apply for or manage your health coverage, SNAP, cash or other state of Colorado benefits.



Create an account , Colorado PEAK

Create a PEAK account to manage your benefits and apply.

[How to adjust solar energy peak and valley .
NenPower](#)

To successfully adjust solar energy peaks and valleys, several strategic approaches must be employed: 1. Energy storage solutions, 2.



[Household peak and valley energy storage container](#)

The energy storage system can effectively reduce the load peak-to-valley difference, improve the utilization rate of power equipment, eliminate the fluctuation of renewable energy power

Login , Peak

Peak Customer Secure Login Page. Login to your Peak Customer Account.



[Peak-valley arbitrage scheme for solar energy storage cabinet system](#)

The invention belongs to the technical field of energy storage, and particularly relates to a peak-valley arbitrage method and device based on an energy storage system.

[Peak Shaving and Valley Filling in Energy Storage Systems](#)

Peak shaving refers to reducing electricity demand during peak hours, while valley filling means utilizing low-demand periods to charge storage systems. Together, they optimize energy



[Home Solar Energy Storage Cabinet-Style](#)



Get help with benefits , Colorado PEAK

Get help with Health coverage, SNAP, cash assistance, RTD LiVE and Connect for Health Colorado.



Peak Shaving and Valley Filling with Energy Storage Systems

Peak shaving and valley filling refer to energy management strategies that balance electricity supply and demand by storing energy during periods of low demand (valley) and releasing it during peak



Systems

Maximize solar energy usage, reduce energy bills, and ensure reliable backup power. Discover advanced inverters, customizable battery capacities, and



10 degree household energy storage cabinet to reduce peak load

Abstract: In order to make the energy storage system achieve the expected peak-shaving and valley-filling effect, an energy-storage peak-shaving scheduling strategy considering the improvement goal



Peak-Valley Battery Energy Storage Systems: The Secret Weapon for

Ever wonder why your energy bills resemble a rollercoaster ride? Meet the peak-valley battery energy storage system - the Swiss Army knife of modern power management.

Contact , Colorado PEAK

Use the Health First Colorado app to take control of your Medicaid benefits! Make an account at Colorado PEAK and download the free Health Colorado app.

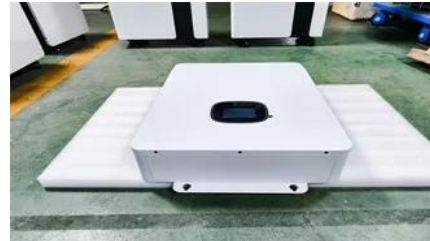


[Frequently asked questions , Colorado PEAK](#)

Frequently asked questions about how to apply for and manage benefits online.

[How to Use Peak and Valley Electricity Storage to Slash Your Energy](#)

Electricity works similarly through peak and valley pricing - a system where you pay premium rates during high-demand hours (usually 4-8 PM) and bargain prices when everyone's asleep.



Contact Us

For catalog requests, pricing, or partnerships, please visit:
<https://european-startups.eu>