

# Operator solar container communication station inverter grid connection



48V 100Ah



## Overview

---

The integrated containerized photovoltaic inverter station centralizes the key equipment required for grid-connected solar power systems -- including AC/DC distribution, inverters, monitoring.

## Operator solar container communication station inverter grid connection

---



### What does the '%' (percent) operator mean?

1 That is the modulo operator, which finds the remainder of division of one number by another. So in this case a will be the remainder of b divided by c.

### [Operator solar container communication station inverter grid](#)

The integrated containerized photovoltaic inverter station centralizes the key equipment required for grid-connected solar power systems -- including AC/DC distribution, inverters, monitoring,



### [What does the !! \(double exclamation mark\) operator do in JavaScript](#)

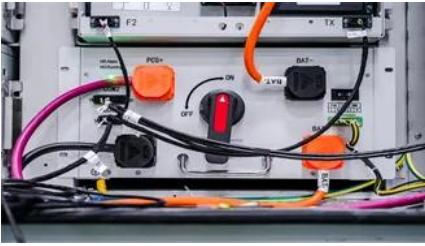
The !! operator reassures the lint tool that what you wrote is what you meant: do this operation, then take the truth value of the result. A third use is to produce logical XOR and logical XNOR.

### [Set up the approval for the grid connection of the solar container](#)

To legally operate and export excess solar energy back to the grid, homeowners and businesses must complete a formal solar interconnection application and secure a utility-approved interconnection



### [What is the difference between & and && in](#)



### [What are bitwise shift \(bit-shift\) operators and how do they work?](#)

The Operators >> is the arithmetic (or signed) right shift operator. >>> is the logical (or unsigned) right shift operator. << is the left shift operator, and meets the needs of both logical and arithmetic shifts.



### [How do you use the ?: \(conditional\) operator in JavaScript?](#)

What is the ?: (question mark and colon operator aka. conditional or "ternary") operator and how can I use it?



### [Java?](#)

I always thought that & & operator in Java is used for verifying whether both its boolean operands are true, and the & operator is used to do Bit-wise operations on two integer



### [Point-to-point solar container communication station inverter grid](#)

While maximizing power transfer remains a top priority, utility grid stability is now widely acknowledged to benefit from several auxiliary services that grid-connected PV inverters may offer.

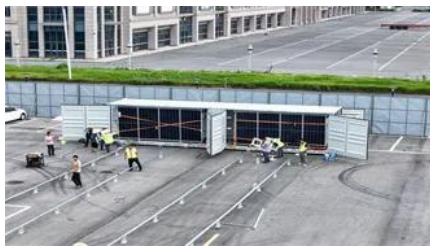


### [When should I use ?? \(nullish coalescing\) vs .. \(logical OR\)?](#)

The ?? operator was added to TypeScript 3.7 back in November 2019. And more recently, the ?? operator was included in ES2020, which is supported by Node 14 (released in April 2020). When the

### [POI solar container communication station inverter grid](#)

The POI projects explain the grid connection with farms. Why do solar farms need a POI? It's the actual physical link that enables energy to move from a solar farm to the utility grid and into the wider



### [What is the difference between the , and , , or operators?](#)

The & operator does "run these 3 functions, and if one of them returns false, execute the else block", while the , does "only run the else block if none return false" - can be useful, but as said,

### **scope resolution operator**

56 :: is the scope resolution operator - used to qualify names. In this case it is used to separate the class AirlineTicket from the constructor AirlineTicket(), forming the qualified name



### [Solar container communication station inverter grid connection](#)

This paper focuses on PV system grid connection, from grid codes to inverter topologies and control issues. The need of common rules as well as new topologies and

## Contact Us

For catalog requests, pricing, or partnerships, please visit:  
<https://european-startups.eu>