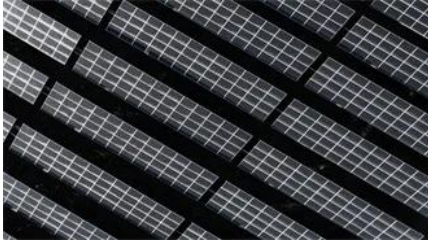


# Normal speed of wind turbine blades



## Normal speed of wind turbine blades

---



### [How fast do the tips of wind turbines spin?](#)

In practical terms, the tips of wind turbine blades can reach impressive speeds. On average, these speeds can range from 180 to 200

### Hyponatremia

Hyponatremia is the term used when your blood sodium is too low. Learn about symptoms, causes and treatment of this potentially dangerous condition.



### How Fast Do Wind Turbines Spin?

Despite their seemingly slow speed from a distance, the rotors of a wind turbine may exceed speeds of 100 miles per hour during steady winds,

### Prediabetes

Prediabetes means you have a higher than normal blood sugar level. It's not high enough to be considered type 2 diabetes yet. But without lifestyle changes, adults and children with



### [How Fast Is The Tip Of A Wind Turbine Mph?](#)

The maximum tip speed of a wind turbine blade is typically between 80 and 90 meters per second, or 179 to 200 mph. Higher velocity increases drag significantly, so turbine efficiency drops as

[Blood pressure chart: What your reading means](#)

Ideal blood pressure is categorized as normal. Increased blood pressure may be categorized as elevated, stage 1 or stage 2 depending on the specific numbers. A diagnosis of high



**Mental health: What's normal, what's not**

Mental health is the overall wellness of how you think, behave and manage your feelings. A mental health condition may be present when patterns or changes in thinking, feeling, or behaving cause



**Low blood pressure (hypotension)**

What's considered low blood pressure for one person might be OK for someone else though. Low blood pressure might cause no symptoms that you notice. Or it might cause dizziness



[How Fast Do Wind Turbines Spin? \(20 RPM, on average\)](#)

Wind turbines' RPM (Rotations Per Minute) speed is the number of complete rotations the blade makes in one minute. The average wind turbine



[How Fast Do the Blades on a Wind Turbine Spin?](#)

For modern, utility-scale wind turbines, the RPM is surprisingly low, typically operating between 10 and 20 rotations per minute at full power production. This slow rotation is a direct



**How Fast Do Wind Turbines Spin?**

Under ideal wind conditions, the blades of wind turbines rotate at the "rated speed." This is the speed at which the turbines can generate power at

### Low hemoglobin count Causes

A low hemoglobin count on a blood test could be normal for you, or it could indicate that you have a condition that needs medical attention.



### High blood pressure (hypertension)

Hypertension can be diagnosed by performing careful and repeated measures of the blood pressure. Blood pressure categories include normal blood pressure, defined as a systolic

### Triglycerides: Why do they matter?

Triglycerides are an important measure of heart health. Here's why triglycerides matter - and what to do if your triglycerides are too high.



### How Fast Do Wind Turbines Spin?

The blades of a modern wind turbine typically spin at a rate of 10 to 20 revolutions per minute (RPM), with specific speeds varying significantly depending on the turbine's design, size, and,

### How fast do wind turbines spin ,Freen

Learn how fast wind turbines spin, blade tip speeds in mph, factors influencing turbine rotation, safety limits, and whether turbines spin without wind



### [How Fast Does a Wind Turbine Spin? \(And Why it](#)

For most wind turbines, the maximum wind speed is around 55mph. When the wind passes through the turbine, it causes the rotor (a large wheel to

**Prednisone (oral route)**

Description Prednisone provides relief for inflamed areas of the body. It is used to treat a number of different conditions, such as inflammation (swelling), severe allergies, adrenal problems,



[Cholesterol ratio or non-HDL cholesterol: Which is most important?](#)

For predicting your risk of heart disease, many healthcare professionals now believe that determining your non-HDL cholesterol level may be more useful than calculating your cholesterol

## Contact Us

---

For catalog requests, pricing, or partnerships, please visit:  
<https://european-startups.eu>