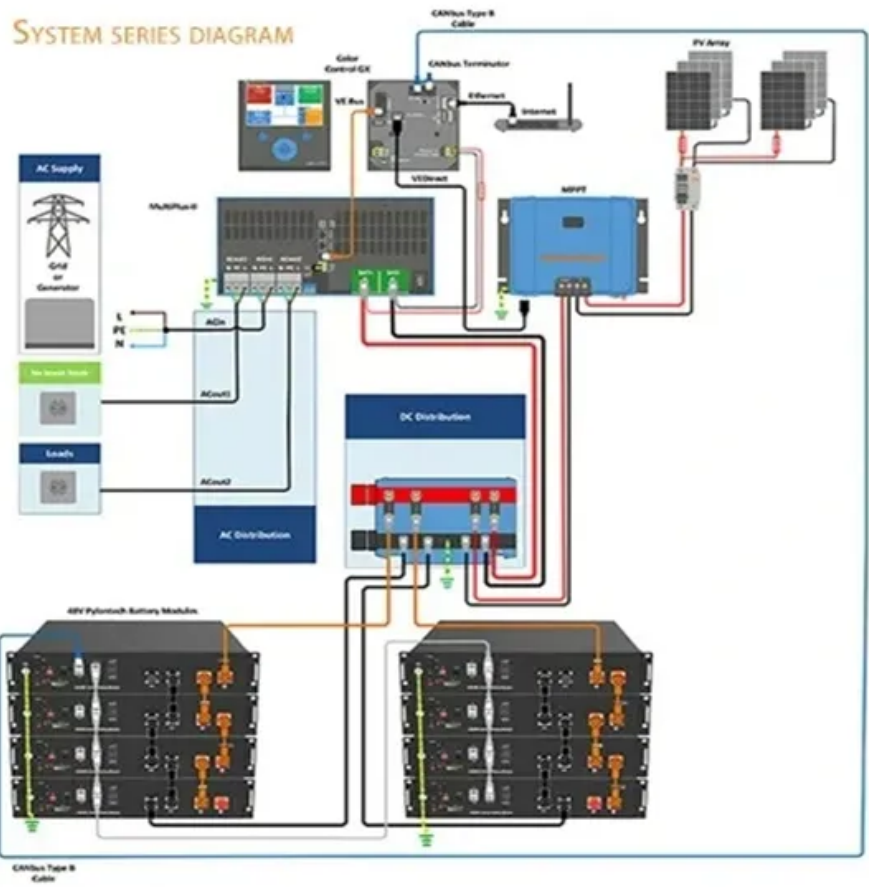


# New energy battery cabinet pre-charging time



## Overview

---

Instead of plugging your electric vehicle into a charging station and waiting for hours, the battery swap model allows a driver to pull up to a cabinet, remove their depleted battery, and exchange it for a fully charged one in a matter of seconds.

## New energy battery cabinet pre-charging time

---



### [Utility-scale battery energy storage system \(BESS\)](#)

Battery storage systems are emerging as one of the potential solutions to increase power system flexibility in the presence of variable energy resources, such as solar and wind, due to their unique



### **When to use "new" and when not to, in C++?**

You should use new when you wish an object to remain in existence until you delete it. If you do not use new then the object will be destroyed when it goes out of scope.



### [Move the most recent commit \(s\) to a new branch with Git](#)

A graphical version manager where you would just add a tag for the new branch without dealing with what seems to me obscure and archaic syntax would be such a relief. My kingdom and



### [New site design and philosophy for Stack Overflow: Starting February](#)

Ah, but new experts will rise up and embrace the new, friendly Stack Overflow that they have always wanted. And maybe rediscover the same things the bitter, hateful old guard found.



### **Homepage , Ample**

Using modular battery swapping, Ample can deliver 100% charge to any EV in under 5 minutes. As battery density increases, Ample maintains the same delivery efficiency.

[How do I push a new local branch to a remote Git repository and track](#)

How do I: Create a local branch from another branch (via git branch or git checkout -b). Push the local branch to the remote repository (i.e. publish), but make it trackable so that git pull and



[Tesla's newest "Folding V4 Superchargers" are key to its most](#)

In March 2026, Tesla's Gigafactory New York produced its final V3 Supercharger cabinet after more than seven years and 15,000 units, pivoting entirely to V4 cabinet production.

[How does the new operator work in JavaScript?](#)

The new operator uses the internal [] method, and it basically does the following: Initializes a new native object Sets the internal [] of this object, pointing to the Function prototype



[Unity: Conflict between new InputSystem and old EventSystem](#)

You probably tried to import a new input system package for multiple input devices compatibility. These type of errors are due to conflict between old and new input system packages

[Is JavaScript's "new" keyword considered harmful?](#)

It is NOT 'bad' to use the new keyword. But if you forget it, you will be calling the object constructor as a regular function. If your constructor doesn't check its execution context then it won't notice that 'this'





### [Battery Storage Cabinets: Design, Safety, and](#)

Learn about battery storage cabinets-how they're designed, the standards they meet, and the best practices for lithium-ion battery safety.

### [Pre-Integrated PV & 215kWh BESS for EV Charging: Solving Grid](#)

Struggling with grid constraints and high costs for EV fast charging? Explore how a pre-integrated 215kWh solar & battery container solves demand charges, ensures uptime, and cuts LCOE, backed



### **ser Manual**

The battery system can detect the battery operating status (voltage, current, temperature, SOC/SOH/SOP estimation, etc.) and adjust the battery charging and discharging and energy storage

### **What is the 'new' keyword in JavaScript?**

The new keyword in JavaScript can be quite confusing when it is first encountered, as people tend to think that JavaScript is not an object-oriented programming language. What is it? What problems



### **How to open link in a new tab in HTML?**

Note I previously suggested blank instead of \_blank because, if used, it'll open a new tab and then use the same tab if the link is clicked again. However, this is only because, as GolezTrol

### [Energy Storage Battery Cluster Pre-Charging: The Secret Sauce for](#)

That's essentially what happens when energy storage systems skip pre-charging - and trust me, the results aren't pretty. Energy storage battery cluster pre-charging has become the industry's best-kept



[Difference between 'new operator' and 'operator new'?](#)

A new expression is the whole phrase that begins with new. So what do you call just the "new" part of it? If it's wrong to call that the new operator, then we should not call "sizeof" the sizeof

[The Future of EV Charging is Here: A Deep Dive into](#)

Instead of plugging your electric vehicle into a charging station and waiting for hours, the battery swap model allows a driver to pull up to a cabinet, remove



#### **SICHARGE FLEX**

Explore modular EV charging solutions that effortlessly adapt to any layout. With various dispenser types and power cabinets, they ensure fully dynamic power

## **Contact Us**

---

For catalog requests, pricing, or partnerships, please visit:  
<https://european-startups.eu>