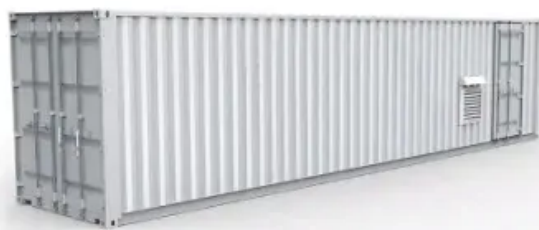


New Energy Solar Photovoltaic Panel Inspection



Overview

Quick Answer: Solar panels require three types of inspections: a mandatory final inspection for new installations before activation, annual DIY self-inspections, and professional inspections every two years.

New Energy Solar Photovoltaic Panel Inspection



[How can I switch to another branch in Git?](#)

Switching to another branch in Git. Straightforward answer, git-checkout - Switch branches or restore working tree files git fetch origin # <---- This will fetch the branch git checkout

[Is JavaScript's "new" keyword considered harmful?](#)

It is NOT 'bad' to use the new keyword. But if you forget it, you will be calling the object constructor as a regular function. If your constructor doesn't check its execution context then it won't notice that 'this'



How to open link in a new tab in HTML?

Note I previously suggested blank instead of _blank because, if used, it'll open a new tab and then use the same tab if the link is clicked again. However, this is only because, as GolezTrol

[New site design and philosophy for Stack Overflow: Starting February](#)

Ah, but new experts will rise up and embrace the new, friendly Stack Overflow that they have always wanted. And maybe rediscover the same things the bitter, hateful old guard found.



[Solar Panel Inspection Checklist: What To Expect](#)

A solar panel inspection is a critical step in



[Residential Solar Photovoltaic Systems Inspection Guidelines](#)

Final inspection of the complete system including modules, panel, wire terminations, grounding, etc.

ensuring your new solar energy system is safe, efficient, and compliant with all regulations. By



2025 Single-Family Solar PV

New solar PV modules may be added to an existing solar PV system to meet the 2025 Energy Code requirements. The new solar PV modules must be part of the ADU's permit application, sized per the

[Inspection Checklist Guide for PV Systems in One](#)

SECTION 2 - Comprehensive Reference: This reference details items that may be relevant in the field inspection of rooftop PV systems that comply with the comprehensive or simplified versions of the



When to use "new" and when not to, in C++?

You should use new when you wish an object to remain in existence until you delete it. If you do not use new then the object will be destroyed when it goes out of scope.

[Solar Panel & Energy Inspection Services . Quality](#)

By combining innovative technologies with extensive inspection experience, our inspectors perform thorough examinations of solar panels as well as associated



[Solar Commissioning Guide: Complete PV System](#)

Comprehensive guide to solar commissioning procedures, testing requirements, and performance verification for residential, commercial, and

[Testing and inspection of photovoltaic plants](#)

For this reason, verification and inspection services in solar photovoltaic plants are essential to ensure the quality of the modules and check their performance. This



[How do I push a new local branch to a remote Git repository and track](#)

How do I: Create a local branch from another branch (via git branch or git checkout -b). Push the local branch to the remote repository (i.e. publish), but make it trackable so that git pull and

[Solar Panel Inspection: Full Guide and Best Practices](#)

Learn everything you need to know about solar panel inspections, from AHJ requirements to best practices for maintenance and long-term system performance.



What is the 'new' keyword in JavaScript?



Newest Questions

Stack Overflow , The World's Largest Online Community for Developers



C# how to create a Guid value?

This produces a new guid, uses that guid to create a ShortGuid, and displays the two equivalent values in the console. Results would be something along the lines of:

The new keyword in JavaScript can be quite confusing when it is first encountered, as people tend to think that JavaScript is not an object-oriented programming language. What is it? What problems



[Solar Panel Inspection Checklist: What To Check](#)

Solar panel inspection guide: Learn what to check, when to inspect (annually + every 2 years), and how to maintain your system safely and efficiently.



Contact Us

For catalog requests, pricing, or partnerships, please visit:
<https://european-startups.eu>