

Industrial and commercial energy storage electricity prices



**200kWh
Battery Cluster**



Overview

On average, commercial and industrial energy storage systems cost between \$320 and \$480 per kilowatt-hour (system-level, installed). Medium projects (500 to 1,000 kWh): Approximately \$360 to \$440.

Industrial and commercial energy storage electricity prices



[Energy Storage Cost and Performance Database](#)

In support of this challenge, PNNL is applying its rich history of battery research and development to provide DOE and industry with a guide to current energy

[Inland Empire Industrial Space for Lease , Martin Commercial Group](#)

Riverside Trade Center, 3233, 3345, 3263-3293
Trade Center Drive, Riverside, No Properties Found!



[Inland Empire Metal Supply, Metal Supplier in Riverside, CA](#)

Industrial Metal Supply Riverside, CA is conveniently located on Main Street, just south off the 10 freeway and just north of the 215/60 interchange in the greater Inland Empire area. Serving a very

[Riverside, CA Industrial & Warehouse Spaces for Rent](#)

Discover Riverside, CA industrial & warehouse spaces for rent. Browse for the latest listings and discover the right property for your needs.



[Industrial Revolution , Definition, History, Dates, Summary, & Facts](#)

Industrial Revolution, in modern history, the process of change from an agrarian and handicraft economy to one dominated by industry and machine manufacturing. These technological

California Electricity Data

Data on California's electricity production, pricing, and consumption.



[How Much Does Commercial Energy Storage Cost?](#)

In this article, we break down typical commercial energy storage price ranges for different system sizes and then walk through the key cost drivers behind those numbers-battery chemistry,

[INDUSTRIAL Definition & Meaning , Dictionary](#)

INDUSTRIAL definition: of, pertaining to, of the nature of, or resulting from industry. See examples of industrial used in a sentence.



INDUSTRIAL , English meaning

INDUSTRIAL definition: 1. in or related to industry, or having a lot of industry and factories, etc.: 2. (of a size or an. Learn more.

Business Electricity Rates , SCE

Explore SCE's business electricity rates to find the best plan for your company's energy needs. Use the Rate Plan Comparison Tool to identify cost-effective options.



[Commercial Battery Storage , Electricity , 2024 , ATB](#)

There are a variety of other commercial and emerging energy storage technologies; as costs are characterized to the same degree as LIBs, they will be added to

[Riverside, CA Industrial & Warehouse Buildings for Sale](#)

See industrial buildings and warehouses that are currently listed for sale in Riverside, CA. Access high-quality photos and use filters to order results by size or price.

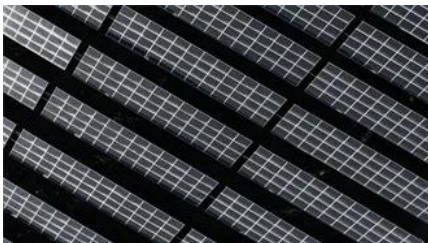


Energy Storage System Cost per kWh 2025

Discover 2025 energy storage system cost trends: residential, commercial, and utility-scale averaging \$130-\$400 per kWh. Explore LFP and

Industrial Supply Company , Industrial Supplies , HUB Industrial Supply

HUB Industrial Supply provides industrial supplies to manufacturers in North America. We provide industry-focused safety, MRO, and production consumables to the pallet and lumber industries,



[How much does a commercial and industrial energy](#)

On average, commercial and industrial energy storage systems cost between \$320 and \$480 per kilowatt-hour (system-level, installed). Small

US Energy Storage Monitor

Each quarter, new industry data is compiled into this report to provide the most comprehensive, timely analysis of energy storage in the US. All forecasts are from Wood Mackenzie Power & Renewables;



Industrial

Define industrial. industrial synonyms, industrial pronunciation, industrial translation, English dictionary definition of industrial. adj. 1. Of,

relating to, or resulting from the manufacturing industry: industrial

[US Energy Storage Monitor , Wood Mackenzie](#)

The US energy storage monitor is a quarterly publication of Wood Mackenzie Power & Renewables and the American Clean Power Association. Each



Riverside, CA Industrial Space For Lease

The average size of industrial space for lease in the Riverside market is 41,270 square feet, with a total of 101 available listings, ranging from smaller spaces to larger facilities of up to 782,209 square feet,

Contact Us

For catalog requests, pricing, or partnerships, please visit:
<https://european-startups.eu>