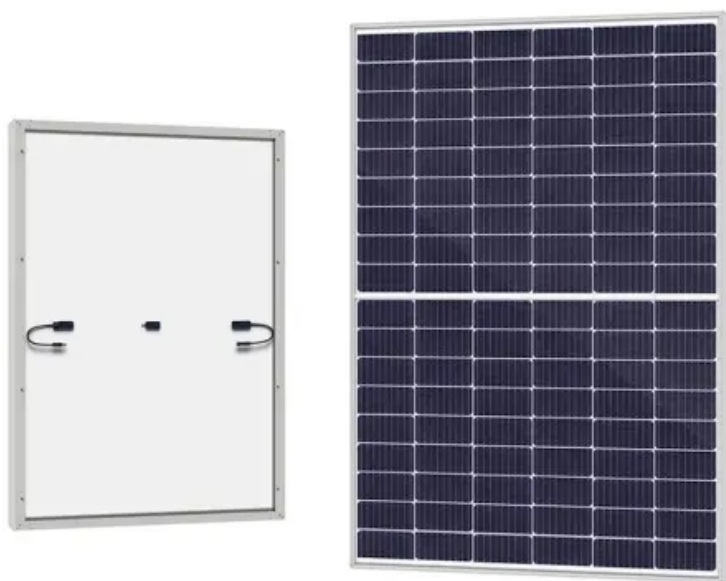


How is the construction of wind-solar complementary 5G communication base stations in Vietnam progressing



How is the construction of wind-solar complementary 5G communication



[Willmeng starts \\$7B Phoenix mixed-use project, companion to TSMC](#)

Willmeng starts \$7B Phoenix mixed-use project, companion to TSMC site Halo Vista, the 2,300-acre master-planned development north of Phoenix, will sit immediately adjacent to the Taiwan

[Construction News and Trends , Construction Dive](#)

Construction Dive provides news and analysis for construction industry executives. We cover commercial and residential construction, focusing on topics like technology, design, regulation, legal



[Construction's new worker demand drops to 350,000 in 2026: report](#)

Construction's new worker demand drops to 350,000 in 2026: report Down from half a million in recent years, the estimate could prove conservative as construction workers retire and

[Solar container communication station wind and solar](#)

Is a multi-energy complementary wind-solar-hydropower system optimal? This study constructed a multi-energy complementary wind-solar-hydropower system model to optimize the capacity configuration



[Current status of wind and solar complementary communication](#)

Cellular base stations powered by renewable



[The top commercial contractors of 2025 , Construction Dive](#)

The top commercial contractors of 2025 Turner maintained the No. 1 spot for another year, Bechtel reclaimed second place and HITT made its top 10 debut after a huge revenue boost.



[Powering 5G Base Stations with Wind and Solar Energy Storage: A](#)

This article explores the integration of wind and solar energy storage systems with 5G base stations, offering cost-effective and eco-friendly alternatives to traditional power sources.



[Chicago Fire FC kicks off construction of \\$750M soccer stadium](#)

Chicago Fire FC kicks off construction of \$750M soccer stadium The privately funded venture, bankrolled by Morningstar founder Joe Mansueto, will become the first major professional



[How is the construction of wind and solar complementary 5G](#)

This article explores the integration of wind and solar energy storage systems with 5G base stations, offering cost-effective and eco-friendly alternatives to traditional power sources.



[Construction Dive's July 2025 economic roundup](#)

Construction Dive's July 2025 economic roundup
The data center boom remains hot but tariffs and

labor concerns are casting doubt over the construction outlook.



[5g solar container communication station wind and solar](#)

This paper develops a method to consider the multi-objective cooperative optimization operation of 5G communication base stations and Active Distribution Network (ADN) and constructs a

[Building wind and solar complementary communication base](#)

In today's 5G era, the energy efficiency (EE) of cellular base stations is crucial for sustainable communication. Recognizing this, Mobile Network Operators are actively prioritizing EE for



[Construction Dive's May 2025 economic roundup](#)

Construction Dive's May 2025 economic roundup Building activity softened last month as tariff impacts and project delays began to ripple through contractors' pipelines.

[Communication Base Station Wind And Solar Complementary](#)

The invention relates to a communication base station stand-by power supply system based on an activation-type cell and a wind-solar complementary power supply system.



[Construction of wind and solar complementary communication base](#)

Then, the application of wind solar hybrid systems to generate electricity at



[Construction Technology News , Construction Dive](#)

The latest construction technology news and analysis for industry professionals.



[Top states for commercial construction spending](#)

Top states for commercial construction spending California, Florida and New York still report high spending but fell lower in per-capita rankings, according to a report from Twisted Nail, a



communication base stations can effectively improve the comprehensive utilization of wind and solar energy.



COMPLEMENTARY DEVELOPMENT

Overall, this study provides a clear approach to assess the environmental impact of the 5G base station and will promote the green development of mobile communication facilities.



Deep Dive

Dive deep into construction industry research, insight and analysis from our team of journalists.

Contact Us

For catalog requests, pricing, or partnerships, please visit:
<https://european-startups.eu>