

Grid-connected inverter container type



Grid-connected inverter container type



[Inverter types and classification , AE 868: Commercial](#)

Aside from the modes of operation, grid-connected inverters are also classified according to configuration topology. There are four different categories under



FLEXINVERTER

GE Vernova's FLEX INVERTER Power Station combines GE Vernova's inverter, with medium voltage power transformer, optional MV Ring Main Unit (RMU), auxiliary transformer and various options

CSS Grid Items

Drag and drop the correct property and value to turn the container into a grid layout. Well organized and easy to understand Web building tutorials with lots of examples of how to use HTML, CSS,



[First Trust NASDAQ Clean Edge Smart Grid Infrastructure Index Fund](#)

GRID , A complete First Trust NASDAQ Clean Edge Smart Grid Infrastructure Index Fund exchange traded fund overview by MarketWatch. View the latest ETF prices and news for better ETF



Grid-connected inverter container type



Grid-tie inverter

Properly configured, a grid tie inverter enables a building to use an alternative power generation system such as solar or wind power without extensive rewiring and without batteries. If the system produces

Aside from the modes of operation, grid-connected inverters are also classified according to configuration topology. There are four different categories under this classification.



[Grid-connected photovoltaic inverters: Grid codes, topologies and](#)

The reader is guided through a survey of recent research in order to create high-performance grid-connected equipments. Efficiency, cost, size, power quality, control robustness and

CSS grid layout

CSS grid layout is a two-dimensional layout system for the web. It lets you organize content into rows and columns and offers many features to simplify the creation of complex layouts.



Realizing common layouts using grids

To round off this set of CSS grid layout guides, we're going to walk through a few different layouts, which demonstrate some of the techniques you can use when designing with grid layout.

[Different Types of Grid Connected Solar Inverters](#)

In this blog, we will cover the common types of Grid-Tied or Grid Connected Solar Inverters used in roof-top Solar Power Plants: String Inverters,

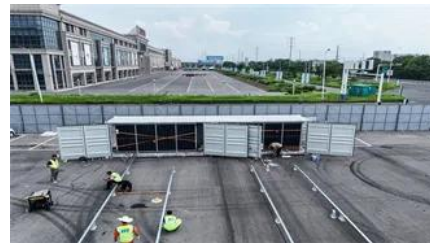


[A Complete Guide to CSS Grid Layout , CSS-Tricks](#)

Our comprehensive guide to CSS grid, focusing on all the settings both for the grid parent container and the grid child elements.

Basic concepts of grid layout

Basic concepts of grid layout CSS grid layout introduces a two-dimensional grid system to CSS. Grids can be used to lay out major page areas or small user interface elements. This guide



What Is A Grid-Tied Inverter?

What Exactly Is a Grid-Tied Inverter? A grid-tied inverter, also known as a grid-connected or on-grid inverter, is the linchpin that connects your solar panels to

CSS grid layout

Like tables, grid layout enables an author to align elements into columns and rows. However, many more layouts are either possible or easier with CSS grid than they were with tables.



CSS Grid Layout

The Grid Layout Module allows developers to easily create complex web layouts. The Grid Layout Module makes it easy to design a

responsive layout structure, without using float or positioning.

[How to Select a Solar Inverter: A Hands-on Buyer's Guide](#)

Learn how to select a solar inverter for grid-tied, off-grid, or hybrid systems. This guide covers sizing, certifications, use cases, and recommended inverters like LZYESS hybrid models.



[Grid Connected Inverter Reference Design \(Rev. D\)](#)

The control design of this type of inverter may be challenging as several algorithms are required to run the inverter. This reference design uses the C2000 microcontroller (MCU) family of devices to

Contact Us

For catalog requests, pricing, or partnerships, please visit:
<https://european-startups.eu>