

# Energy storage cabinet container production line



## Overview

---

A BESS Container Assembly Line is not just another manufacturing setup-it's a comprehensive, automated production system specifically engineered to integrate battery modules, power conversion systems, thermal management, and safety features into standardized shipping containers.

## Energy storage cabinet container production line

---

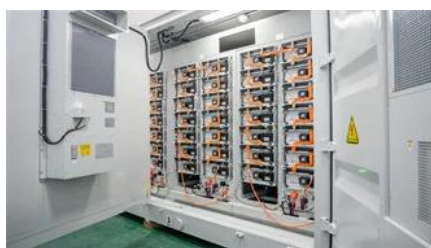


[Next-generation geothermal energy: Promise, progress, and challenges](#)

Geothermal energy, a clean, continuous energy source accessible in many locations, has been slow to catch on. Nearly 2,000 years ago, the Romans made extensive use of geothermal

[Power Storage Container Production Process: From Raw Materials to](#)

The power storage container production process is like baking a multi-layered cake - miss one ingredient or step, and the whole system could short-circuit faster than a birthday candle in a



[ENERGY STORAGE CABINET ASSEMBLY PRODUCTION LINE](#)

The liquid-cooled energy storage system integrates the energy storage converter, high-voltage control box, water cooling system, fire safety system, and 8 liquid-cooled battery packs into one unit.

[Study: Fusion energy could play a major role in the global response to](#)

Investigators in the MIT Energy Initiative and the MIT Plasma Science and Fusion Center have found that - depending on its future cost and performance - fusion energy has the potential



[Energy storage cabinet container production line](#)

This production line is used for the semi-automatic production of energy storage containers, compatible with the production of

main control box (673\*711.5\*234), electric box

[Energy Storage Cabinet Production Line , Decoiler + Leveler + Laser](#)

Customer production line running for energy storage cabinet manufacturing. The system processes steel coils through a complete automated workflow: Decoiling -> Precision leveling -> Laser



[Making clean energy investments more successful](#)

New research emphasizes the importance of well-validated models and forecasting tools in evaluating choices for investments in clean energy technologies and policies by governments and

[MIT Energy Initiative conference spotlights research](#)

At the MIT Energy Initiative's Annual Research Conference, industry leaders agreed collaboration is key to advancing critical technologies amidst a changing energy landscape.



[Giving buildings an "MRI" to make them more energy-efficient and](#)

Founded by a team from MIT, Lamarr.AI utilizes drones, thermal imaging, and AI to identify energy waste and structural issues in buildings and recommend retrofits.

**BESS Container Assembly Line Guide 2025**

Complete guide to BESS Container Assembly Line technology, automation system, and manufacturing processes. Expert insights on energy storage production in 2025.





[Energy Storage Container Production Line \\_Changzhou Mentechs](#)

Project Content: Energy Storage Container  
Assembly Line Production Cycle Time: 40min  
Key Processes: - Container loading - Cooling system installation - Automated electrical cabinet assembly

[Explained: Generative AI's environmental impact](#)

MIT News explores the environmental and sustainability implications of generative AI technologies and applications.



**Outdoor Energy Storage System Cabinets**

EPC Energy serves the utility and developer market with multi-MWh solutions featuring 40? container or skid-based designs. These

[A new approach could fractionate crude oil using much less energy](#)

MIT engineers developed a membrane that filters the components of crude oil by their molecular size, an advance that could dramatically reduce the amount of energy needed for crude oil



[How artificial intelligence can help achieve a clean energy future](#)

A look at how AI can be used to help support the clean energy transition by helping to manage power grid operations, plan infrastructure investments, guide the development of novel

[New facility to accelerate materials solutions for fusion energy](#)

The new Schmidt Laboratory for Materials in Nuclear Technologies (LMNT) at the MIT Plasma Science and Fusion Center accelerates fusion materials testing using cyclotron proton beam



[MIT engineers create an energy-storing supercapacitor from ancient](#)

MIT engineers created a carbon-cement supercapacitor that can store large amounts of energy. Made of just cement, water, and carbon black, the device could form the basis for

## Contact Us

---

For catalog requests, pricing, or partnerships, please visit:  
<https://european-startups.eu>