

Battery cabinet grounding wire



Battery cabinet grounding wire

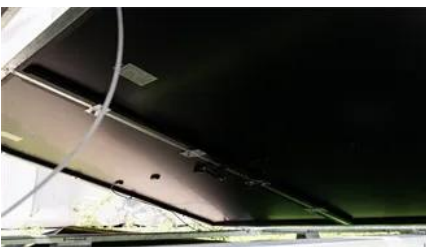


Battery Recycling for Businesses

Battery Recycling for Businesses Use the chart below to determine how to handle used batteries generated by your business. Batteries that are considered hazardous must be recycled or managed

Where to Ground Battery Cable

What gauge wire should I use for battery grounding? Match or exceed the positive cable size - typically 4 AWG for most vehicles, 2/0 AWG for high-performance systems.



Main Battery Change

Going to change the service battery in my 15 V40cc D2. Anything I need to be ware of or look out for ??

[Grounding a Metal Solar Battery Box: Essential Safety Tips for Your](#)

Copper Grounding Wire: Copper grounding wire serves as the primary conductor that connects the battery box to the ground. It provides a low-resistance path for electrical faults to



Household Battery Recycling

Household battery recycling locations Lead-acid batteries, or "automotive type batteries," are banned from disposal. Consumers may bring lead-acid batteries to any Wisconsin retailer that

sells these

Amazon : Battery Ground Wire

Discover reliable battery ground wire solutions. Shop pure copper cables, terminals, and replacement parts for automotive needs.



[Multiple Warning Lights/Error Messages/Battery deterioration](#)

TBH I would look at a replacement battery on the back of that info - but can't you get one from where you bought it? I don't know what a compliance centre is but does the vehicle come with

DC Battery Rack Grounding

For a standard substation DC battery rack, I am having trouble determining whether a ground is required to be installed along with the wires between the battery disconnect switch and the



[Energy Storage Battery Cabinet Grounding Wire Requirements:](#)

This article explores grounding standards, installation best practices, and common pitfalls, with actionable insights for engineers and project managers in the renewable energy sector.

[importance of earthing a rack battery and its cabinet](#)

The bond wire going from the cabinet door to the cabinet, takes care the door. You can run a ground wire from the cabinet side connection of this wire, to your grounding system.





[Why Does a Flammable Storage Cabinet Need a](#)

Use a copper grounding wire (typically 12-14 AWG) for best conductivity. Avoid using pipes or structural steel as a ground-use a proper

Battery issues

I've had both batteries replaced (with the correct models), done a 100 mile trip, overnight smart battery charge, charging voltage is fine, system messages cleared but I am still getting "low



[BMS \(Battery monitor System\) reset for new battery](#)

Hi, there a problem for battery replace. My maintenance plant told me the BMS need to be reset when the battery replace for a new by my self. Does anyone know how to reset the BMS by

Earthing the battery cabinet

Earth the battery management system during installation. Connect the supplied grounding cable to the battery cabinet grounding point (hexagon socket, AF13, torque: 8 Nm).



[Low battery charge error , Volvo V40 Forums](#)

Hello everyone, I just bought my first car, a 2014 Volvo V40 T3, and a warning appears on the dashboard that says 'low battery charge.' The car is recently

Secondary Battery

My main battery just died, had it replaced with same, and car kept giving me Battery charging, so no stop start. When stop/start worked, it was for about 10 sec, and car would start, with



Battery Ground Cable Size Guide

To make sizing easy, the chart below outlines the recommended battery ground cable sizes based on current draw (amperage) and cable length. This reference ensures your system runs

Low battery charge message

The low battery charge message relates to the main battery. On vehicles with stop/start systems and intelligent alternators, the vehicle battery is designed to operate at around 80% SOC, to



Main Battery Replacement

Since that battery also supplies power to the ECU memory when the car is switched off, as well as powering the stop/start system, don't ignore it. Like the main battery, Volvo recommend

Contact Us

For catalog requests, pricing, or partnerships, please visit:
<https://european-startups.eu>