

# Battery Energy Storage Container Support Policy



## Overview

---

This document offers a curated overview of the relevant codes and standards (C+S) governing the safe deployment of utility-scale battery energy storage systems in the United States.

## Battery Energy Storage Container Support Policy

---



### Battery Recycling for Businesses

Battery Recycling for Businesses Use the chart below to determine how to handle used batteries generated by your business. Batteries that are considered hazardous must be recycled or managed

### [Low battery charge error , Volvo V40 Forums](#)

Hello everyone, I just bought my first car, a 2014 Volvo V40 T3, and a warning appears on the dashboard that says 'low battery charge.' The car is recently

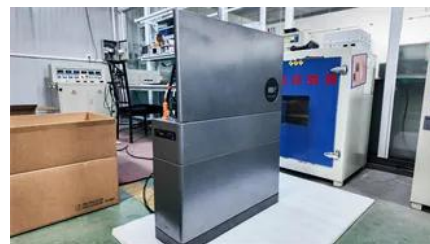


### Low battery charge message

The low battery charge message relates to the main battery. On vehicles with stop/start systems and intelligent alternators, the vehicle battery is designed to operate at around 80% SOC, to

### Main Battery Change

Going to change the service battery in my 15 V40cc D2. Anything I need to be ware of or look out for ??

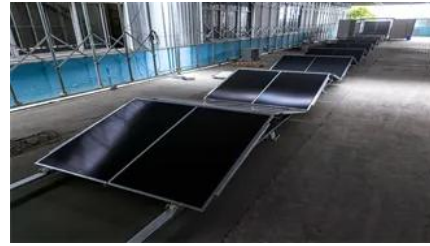


### Battery issues

I've had both batteries replaced (with the correct models), done a 100 mile trip, overnight smart battery charge, charging voltage is fine, system messages cleared but I am still getting "low

### Main Battery Replacement

Since that battery also supplies power to the ECU memory when the car is switched off, as well as powering the stop/start system, don't ignore it. Like the main battery, Volvo recommend



### [Battery Energy Storage Container Support Policy](#)

battery energy storage system (BESS) is an electrochemical device that charges (or collects energy) from the grid or a power plant and then discharges that energy at a later time to provide electricity or

### [New York State Battery Energy Storage System Guidebook](#)

The Battery Energy Storage System Guidebook contains information, tools, and step-by-step instructions to support local governments managing battery energy storage system



### [Recommended Fire Department Response to Energy](#)

This guide serves as a resource for emergency responders with regards to safety surrounding lithium ion Energy Storage Systems (ESS). Each

### [U.S. Codes and Standards for Battery Energy Storage](#)

This document offers a curated overview of the relevant codes and standards (C+S) governing the safe deployment of utility-scale battery energy storage systems in



### Battery Energy Storage Systems Ordinance

Battery energy storage systems (BESS) allow solar and wind energy to be stored and used later - helping stabilize the statewide grid and



**PHOENIX REGIONAL STANDARD OPERATING**

Contact vendor-specific technical support for assistance including battery management system (BMS) data. For residential units that are located inside a dwelling unit or garage, the space should be

improve community



[Battery Energy Storage Systems: Main Considerations for Safe](#)

This webpage includes information from first responder and industry guidance as well as background information on battery energy storage systems (challenges & fires), BESS installation

[BATTERY ENERGY STORAGE CONTAINER SUPPORT POLICY](#)

Lahore, Pakistan - March 24, 2025 - In a landmark move towards advancing sustainable energy solutions in Pakistan, Huawei and AE Power have officially entered into a strategic partnership to



[IR N-3: Modular Battery Energy Storage Systems](#)

This Interpretation of Regulations (IR) clarifies specific code requirements relating to battery energy storage systems (BESS) consisting of prefabricated modular structures not on or inside a building for

**Replacement battery**

Hiya, I have an early 2014 D2 cross country automatic. It keeps complaining about battery level, even after our (rare but very long drives). So I think the battery is shot. Funnily, when I put my



### Secondary Battery

My main battery just died, had it replaced with same, and car kept giving me Battery charging, so no stop start. When stop/start worked, it was for about 10 sec, and car would start, with

### Household Battery Recycling

Household battery recycling locations Lead-acid batteries, or "automotive type batteries," are banned from disposal. Consumers may bring lead-acid batteries to any Wisconsin retailer that sells these



### [Multiple Warning Lights/Error Messages/Battery deterioration](#)

TBH I would look at a replacement battery on the back of that info - but can't you get one from where you bought it? I don't know what a compliance centre is but does the vehicle come with

### EXECUTIVE SUMMARY Key Findings

Energy storage is not a new phenomenon, given the early history of harnessing power through water wheels and mill ponds, but in recent years, storage has gained increased attention with



## Contact Us

For catalog requests, pricing, or partnerships, please visit:  
<https://european-startups.eu>